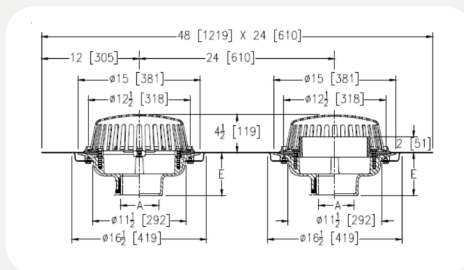


R1630

COMBINATION MAIN ROOF & OVERFLOW DRAIN WITH 15" CAST IRON-DOME



PRODUCT SPECIFICATION: 15" [381 mm] Diameter roof drain and overflow drain, Dura-Coated cast iron bodies with combination membrane flashing clamp/gravel guards, double Top-Set deck plate, and cast-iron domes

A - Pipe Size In. [mm]	Approx. Wt. Lbs. [kg]	Dome Open Area Sq. In. [cm ²]
2, 3, 4 [51, 76, 102]	73 [33]	103 [665]
6 [152]	74 [34]	
8 [203]	75 [34]	

PIPE SIZE

3, 4, 6 [51, 76, 152]
2, 3, 4, 6, 8 [51, 76, 102, 152, 203]
2, 3, 4, 6, 8 [51, 76, 102, 152, 203]
2, 3, 4 [51, 76, 102]

(Specify size/type) OUTLET

_C Inside Caulk
_P Threaded
_NH No-Hub
_NL Neo-Loc

'E' BODY HT. DIM.

5-1/4 [133]
3-3/4 [95]
5-1/4 [133]
4-5/8 [117]

PREFIXES

RC - Cast Iron body Assembly Cast Iron Dome*

RA - Cast Iron body Assembly Aluminium Dome

SUFFIXES

- **AR** Acid Resistant Epoxy Coated Cast Iron
- **E** 2 [51] High Static Extension (Specify Height)
- **G** Galvanized Cast Iron
- **SC** Secondary Clamping Collar
- **SS** Stainless Mesh Screen Over Dome
- **TC** Neo-Loc Test Cap Gasket (2, 3, 4 [51, 76, 102] NL Bottom Outlet Only)
- **VP** Vandal-Proof Secured Top
- **XJ** Vertical Expansion Joint
- **84** Stainless Steel Perforated Gravel Guard
- **85** Stainless Steel Perforated Extension