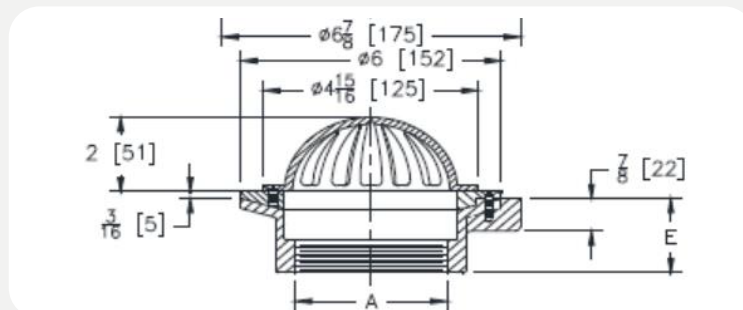


R1810

6" DIAMETER CORNICE DRAIN BOTTOM OUTLET



PRODUCT SPECIFICATION: 6" [152mm] Diameter by 2" [51mm] high cornice drain, Dura-Coated cast iron body, plain bronze dome and membrane flashing clamp

A- Pipe Size In. [mm]	Approx. Wt. Lbs. [kg]	Dome Open Area Sq. In. [cm ²]
3 [76]	6 [3]	11 [71]
4 [102]	7 [4]	

PIPE SIZE	(Specify size/type) OUTLET	'E' BODY HT. DIM.
3, 4 [76, 102]	_P Threaded	2 [51]
3, 4 [76, 102]	_NH No-Hub	4-1/2 [114]

PREFIXES

RB - Cast Iron body Assembly Plain Bronze Dome*

RN - Cast Iron body Assembly Polished Nickel Bronze Dome

SUFFIXES

- **BS** Bronze Mesh Screen Over Dome
- **C** Underdeck Clamp
- **FS** Flat Strainer (ZN)
- **G** Galvanized Cast Iron
- **HD** 5-3/4 [146] High Dome
- **R** Roof Sump Receiver
- **SS** Stainless Steel Mesh Screen Over Dome
- **VP** Vandal-Proof Secured Top