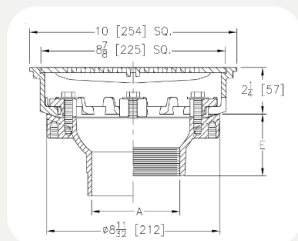


R1580

PROM-DUCK ROOF DRAINS CAST IRON BODY WITH 10" SQUARE LIGHT-DUTY GRATING



PRODUCT SPECIFICATION: 10" [254mm] Square Top Prom-Deck drain, Dura-Coated cast iron body with rotatable square promenade frame with seepage openings, frame clamps and light duty heel-proof grate

A Pipe Size In. [mm]	Approx. Wt. Lbs. [kg]	Grate Open Area Sq. In. [cm ²]
2, 3, 4 [51, 76, 102]	20 [9]	21 [136]

PIPE SIZE	(Specify size/type) OUTLET	'E' BODY HT. DIM.
3, 4 [76, 102]	_C Inside Caulk	3-7/8 [98]
4 [102]	_P Threaded	3 [76]
3 [76]	_P Threaded	2- 3/4 [70]
2 [51]	_P Threaded	2- 7/16 [62]
2, 3, 4 [51, 76, 102]	_NH No-Hub	4 [102]
2, 3, 4 [51, 76, 102]	_NL Neo-Loc	3-13/16 [97]

PREFIXES

RC - Cast Iron body Assembly Cast Iron Grating*

RN - Cast Iron body Assembly Polished Nickel Bronze Grating

SUFFIXES

- **AR** Acid Resistant Epoxy Coated Cast Iron
- **C** Underdeck Clamp
- **DP** Top-Set® Roof Deck Plate
- **DG** Duresist Grate
- **DR** Top-Set® Drain Riser
- **E** 2 [51] High Static Extension (Specify Height)
- **EB** Top-Set® Adjustable Extension Assembly
- **G** Galvanized Cast Iron
- **SC** Secondary Clamping Collar
- **TC** Neo-Loc Test Cap Gasket
(2, 3, 4 [51, 76, 102] NL Bottom Outlet Only)
- **VP** Vandal-Proof Secured Top
- **Y** Sediment Bucket
- **85** Stainless Steel Perforated Extension
- **90** 90° Threaded Side Outlet Body