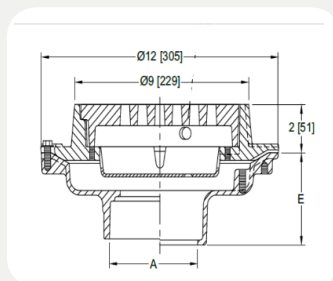


R5080

9 [229] ROUND TOP HEAVY-DUTY DRAIN



PRODUCT SPECIFICATION: 9" [229mm] Diameter top drain, Epoxy Coated cast iron body with bottom outlet, combination membrane flashing clamp and frame with heavy duty slotted grate and sediment bucket

A Pipe Size In. [mm]	Approx. Wt. Lbs. [kg]	Grate Open Area Sq. In. [cm ²]
2,3,4 [51,76,102]	22 [10]	18[116]
6[152]	26[12]	

PIPE SIZE	OUTLET TYPE	BODY HT ('E')
4 [102]	_C Inside Caulk	3-3/4 [95]
4 [102]	_G Inside Gasket	3-3/4 [95]
4 [102]	_P Threaded	2-3/4 [70]
2, 3, 4 [51, 76, 102]	_NH No-Hub	4-3/4 [121]
6 [152]	_NH No-Hub	5-1/4 [133]
2, 3, 4 [51, 76, 102]	_NL Neo-Loc	3-9/16 [90]

PREFIXES

R - Cast Iron body and Top*

RN - Cast Iron body Assembly with Polished Nickel Bronze Top

SUFFIXES

- **AR** Acid Resistant Epoxy Coated Cast Iron
- **G** Galvanized Cast Iron
- **P** Trap Primer Connection
- **HP** Heel-Proof Grate
- **T** Square Top
- **VP** Vandal-Proof Secured Top
- **90** 90-degree threaded side outlet body