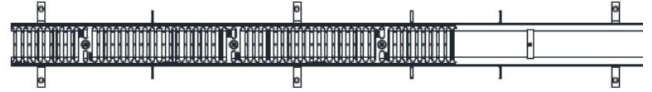
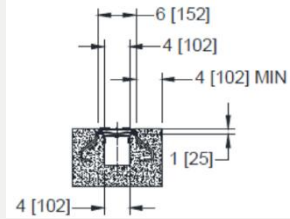


## R7060

### 6" FRAME AND GRATING SYSTEM



**PRODUCT SPECIFICATION:** Frame and Grate System with 120" [3048mm] long, 6" [152mm] wide and have a 4" [102mm] clear opening. Frame shall mechanically lock into the concrete surround every 10" [254mm]. Ductile Iron grate is rated class C per the DIN EN1433 top load classifications supplying with 20" [508mm] nominal lengths with 1/2" [13mm] wide slots, and 3/4" [19mm] bearing depth. The Heavy- Duty Carbon Steel Frame powder coated Assembly with 1/4" [6mm] thick and 12 - 4" [102mm] long concrete anchors per 120" [3048mm].

#### SUFFIXES

- **BF** Black Acid Resistant Coated Frame
- **GF** Galvanized Frame Assembly
- **SF** Type 304 Stainless Steel Top Frame

#### GRATE OPTIONS

- **DGC** Ductile Iron Slotted Grate - Class C \*
- **DGE** Ductile Iron Slotted Grate - Class E
- **BDC** Black Acid-Resistant Epoxy Coated Ductile Grate - Class C
- **BDE** Black Acid-Resistant Epoxy Coated Ductile Grate - Class E